

Grace United Church of Christ

Annual Meeting – February 15, 2009

Grace Church - a gathering of caring and friendly Christians...

family of faith

outreach to those less fortunate

giving

stewardship

fellowship among members

uplifting music

inspiring worship

youth

Defining Grace

GRACE UNITED CHURCH OF CHRIST

49 West Baltimore Street ▪ Taneytown, MD 21787

(410) 756-2302

E-mail: graceucctaneytown@verizon.net

Website: graceucctaneytown.org

2008 ANNUAL REPORT

OFFICIAL CALL TO ANNUAL MEETING

The Consistory calls all members of Grace United Church of Christ to the Annual Meeting of the Congregation to be held on Sunday, February 15, 2009. The meeting will be held in the Parish Hall immediately following the morning worship, with a luncheon served by our Committee of Lay Life and Work. In the event of bad weather, the meeting will be held on a later date, to be determined. All members and/or visitors are invited to attend.

No matter who you are or where you are on life's journey, you are welcome here and we want you to be involved. We understand that God has created each one of us and given us talents and gifts to serve others. We want to come together in worship, mission, education, and fellowship to listen and respond to God's call in our lives collectively and as individuals.

Our heritage shows that God has been our help in ages past. We have hopes and dreams and we pray for God's guidance.

Cindy M., Consistory Chair

TABLE OF CONTENTS

	<u>Page</u>
Directory of Church Leaders and Committees	2
Pastor's Report	3-5
Consistory President's Report	6
Summary of Membership Changes	7
Budget for 2009 (pages omitted; see hard copy)	8-9
Expenses by Category & Income By Source	10
Member Giving Trends	11
Treasurer's Report (pages omitted; see hard copy)	12-16
Balance Sheet	17-18
Trust Budget Report	19
- Trust Budget Account Summary	20
Trust Investment Fund Report	21
- Parsonage Fund Report	22
Ministries of Grace	23
Ministry Participants	24
Membership Growth and Outreach Committee Report	25
Worship and Music Committee Report	26
Christian Education Committee Report	27
- Christian Education Treasury 2008 Year-End Statement	28
Youth Group Report	29
Grace United Learning Center Report	30
- Grace United Learning Center Financial Report	31
Lay Life and Work Committee Report	32
- Lay Life and Work Financial Report	33-34
"Son"-Shine Committee Report	35
Property Committee Report	36
Cemetery Board Financial Statement & Report	37
Homewood Auxiliary Report	38
H. Scholarship Committee Report	38
Membership Directory (yellow pages) (pages omitted; see hard copy)	

2008 DIRECTORY OF CHURCH LEADERS AND COMMITTEES

Consistory 2008 Elders

Anna M. (2008)
George P. (2008)
Tom L. (2007)
David R. (2008)
Cindy M. (2007)
Mike G. (2009)

Consistory 2008 Deacons

May F. (2008)
Libby C. (2008)
Scott W. (2008)
Keith S. (2009)
Gary M. (2009)

Consistory 2008 Officers

President – Cindy M.
Vice Pres. – Tom L.
Secretary – Mike G.
Treasurer – Elaine W.
Chief Deacon – Scott W.

Cemetery Board

President – Cindy R.
Secretary-Treasurer – Gary A.
Keeper of the Plot – Scott W.
Board Member – Gary A.
Board Member – George F.

Church Staff

Children's Church – Kelly H.,
Erin O-S., Terri S.,
Elizabeth A.
Choir Director – Lois H./Anna M.
Organist – Fairy F.
Sexton – Frank D.
Office Administrator – Beverly B.

Church School

General Superintendent – Bonnie M.
Secretary – Jay W.
Treasurer – Jay W.

Pastoral Relations Committee

Gary A.
Connie H.
Ellen L.
Fred M.

PASTOR'S REPORT
2008 – 'A Year Of Discovery'

In the year 2008, we continued to explore ways of being the church together. What makes it different from 2007 was that we made a shift to include spiritual nurture in most of the events. There was a resurrection of Movie Night showing films with spiritual meaning followed by a time of discussion and sharing. A bible study group was also formed and met in member homes, completing two study programs with the desire for a third. We also launched Lenten and Advent programs of fellowship and devotion that were well attended when compared to past Advent and Lenten studies. This was a major breakthrough for us a congregation. We discovered we do like to come together for fellowship, but also desire a spiritual purpose for our gathering. In terms of membership we are still growing in numbers, but that reality may not stand out as we also suffered many member losses due to death. It was a particularly mournful year in the loss of so many people we dearly love. In response to those losses, a grief support group was offered under the direction of Kathy Bare, Grief Coordinator of Carroll Hospice. Turn-out at the meetings was promising at first, but waned toward the holidays. We expect to continue offering this much needed support in 2009.

New growth in our congregation has been a great blessing. We welcome with open arms all those who joined into the family of faith at Grace. We will continue to work at assisting these newest members in our midst with 'getting to know' us and inviting them into the active areas of ministry in our church. There is much that happens behind the scenes and below the surface of Grace that enriches our spiritual life. We hope our newer members come to discover these joys and challenges of faith and mission. We also hope to learn from them, the joys and sorrow of their spiritual journeys that have shaped their lives of faith.

There were some challenges we faced in 2008. The loss of our Choir Director affected the direction of our choral music program. We are grateful to Lois H. for her year and a half of service and expanding our musical horizons, and set ourselves to the task of searching again. In the interim, we are grateful to Anna M. for filling in as director for the holiday season. In the area of church finances, we found ourselves faced with shortfalls in the current expense budget that required careful attention and adaptation, yet at the same time we were surprised by bequests, gifts, and capital improvement support; Unexpectedly, we were presented with a need to upgrade our heating and air-conditioning units; first in our Learning Center, followed by the remainder of our building. Much can be said about the wonderful signs of financial support for these efforts as they unfolded and were met with a can-do spirit; In the area of church leadership, our Consistory operated an entire year with an opening for Deacon. A second slot was filled by mid-year by Gary M. (thank you, Gary!). It has become a challenge to find folks to serve the various forms of Christ's mission in this church in recent years. However, we have faith that God's Spirit is moving among us and planting seeds in individuals who will ultimately seek to serve as Christ calls them. Currently we are very thankful to all who are serving or have served our church in the past. Your work and sacrifice have provided for a sustained ministry of Grace and a hopeful view of our future ministries.

With all that has occurred, both good or challenging, we give thanks to our God who is always our sustainer. We look to the year ahead to find balance in stewardship and finances; depth of spirit and transformation in worship; and vision and renewal in the calling that God has placed before us as we continue the mission Christ has made ours. So let us look to our future with hope and confidence, committing ourselves and resources to God's vision for Grace. May we pray... always, never ceasing.

General Summary of Pastoral Duties Performed in 2008

Ministry in Grace Church:

- Planned and led 61 Worship Services [including Mid-week Lenten and Advent services, and participated in the Carroll UCC Joint Worship (4/13)]
- Officiated over:
 - * 8 Baptisms (Michael D., Nathan G., Devin S., Emily M., Leah M., Joel W., Skylar T., William Vance S.)
 - * 2 Weddings (Blaine & Karen F., Charles & Virginia P.) with 4 pre-marital sessions and 2 rehearsals)
 - * 8 Funerals (Robert O., Rebecca C., Fred M., George C., Bob B., Kenneth A., Freda R., Sarah B.); attended viewings, and Funeral Suppers.
- 7 Confirmation Classes and a Dinner for Confirmands and their families
- 4 New Member Classes
- Welcomed 10 new members plus 7 Confirmands into full membership at Grace UCC
New Members (Jim & Linda S., Paul & Carole B., Michael & Kathy C., Ken & Pat C., Richard & Judy S.)
Confirmands (Kelsey & Kyle C., Emily M., Kevin P., Devin S., Macy V., Andrew W.)

Attended the following Church Events:

(Annual Meeting, Budget Workshops, Church Supper, Served at Fireman's Supper, Family Night, Annual Church Picnic, Young at Heart Picnic, Rally Day Picnic, Harvest Festival, Skate Party, Movie Night, Everybody's Birthday, Easter Egg Hunt, Easter Morning Breakfast, Confirmation Dinner, Confirmation Reception, New Members Receptions, New Members Picnic)

Attended 42 Church Committee Meetings from the following list:

(Lay Life and Work, Christian Ed, Consistory, Membership Growth & Outreach, Pastoral Relations, Spiritual Council, "Son"-Shine, GULC Support, Worship & Music)

Attended Several Youth Meetings:

(Car Wash, Pumpkin People, CROP Walk, Sleep-Out for Homelessness Awareness & assisted with Youth Cookout)

Chaperoned 3 Field Trips for GULC & attended the GULC Christmas Program

Assisted Outreach Committee in development of Advent/Christmas Flyers

Fielded 10 requests for emergency assistance (approximately \$600.00 in assistance distributed)

Processed 2 Membership Transfers Out of Grace UCC: Paul & Wanda G.

General Summary of Pastoral Duties Performed in 2008 (continued)

Visitations

- 141 Visits to hospital/home/nursing homes; 30 Communed in-home; 50 Office consultations
- 203 Pastoral telephone calls, 47 Pastoral care e-mails

Ministry in the Wider Church (Catoctin Association)

- Attended the Central Atlantic Conference UCC Annual Meeting in Delaware
- Attended 2 Catoctin Association Semi-annual Meetings
- Attended 2 Carroll County Clergy Meetings.

Ministry in our Community of Taneytown

- Participated in 10 regular meetings of the Caring & Sharing Ministries of Taneytown
- Participated in 3 Clergy meetings of the Caring & Sharing Ministries of Taneytown
- Prepared and led 4 Bible Studies at the Taneytown Senior Center ('Study of Man')
- Participated in 2 Community Worship Services for Caring and Sharing Ministries of Taneytown (Good Friday, Thanksgiving)
- Participated in the Caring & Sharing Ministries Community VBS
- Attended and led prayer for several Carpenter's Table meal programs
- Led 4 Ecumenical Worship Services at St. Catherine's Nursing Center, Emmitsburg

Ministry in the Larger Community

- Offered 4 Grief Support Group Meetings in co-sponsorship with Carroll Hospice.
- Attended Hoffman Home for Youth Family Day.

Continued Education

- Participated in 3 Wholeness-in-Ministry Continuing Education Seminars for new clergy at Lancaster Theological Seminary.

I hope this gives you a general snapshot of my activities over the 2008 church year. It was another good year of growth in numbers for Grace UCC. May the Holy Spirit guide us with a refined vision of ministry and empower us for our journey of Christian ministry together in 2009.

Prayerfully submitted,
Rev. Steven Ostendorf-Snell, Pastor



CONSISTORY PRESIDENT'S REPORT *"Defining Grace"*

The election is behind us, the holidays have come and gone, and the economy still presents many challenges. We continue to evolve and grow daily. But it is not easy.



Grace United Church of Christ, for all our struggles, is a warm, welcoming, loving family of Christians. Many of our members have worshipped together for many years and have watched each other's children grow up to have children of their own. Others have joined our congregation within the past year. We have meaningful, joyful worship, inspiring music, and Christian education that helps us to be responsible disciples of Jesus. We encourage the giving of time, talents, and financial resources. We are committed to a caring, active ministry to each other, our community, and the world. We celebrate the diversity of all who join us and seek to use the unique talents of each.

In 2008, Consistory members worked very hard to keep Grace Church a viable, vital congregation. Some of our accomplishments in 2008 were:

- Pastor Performance Review
- New Heating System
- Capital Project Campaign
- Reaching out to members no longer attending church. (Letter)
- Grace UCC Manual, Policies and Procedures Update (Requires a vote to approve as amended)
- Institution of 'Phonevite' for Prayer Chain
- Stewardship Committee
- 2009 Budget
- New Distribution Method(s) of Church Correspondence

Our world continues to change and to present challenges, and we will face them.

We don't want doubt or conflict. We don't want to make tough decisions. We don't want complexity and ambiguity. We don't want uncertainty, in the market, in the office, or at home. We don't want insecurity. We don't want loss or hard times. The hope God makes possible does not spare us these things. But in retrospect, they often turn out to be exactly what we needed to move ahead.

In light of the changes of our world, our economy, our community and our congregation, we want to evaluate what is most important to us. We want to define Grace United Church of Christ to reflect who we are and to grow in our faith and share our faith in God with the world around us. We want to set attainable goals.

Just as God loves and accepts us as we are, God loves our congregation as it is, warts and all. We don't need to be perfect or even identify and fix our weaknesses before God can use us as a vital force in our community and the world.

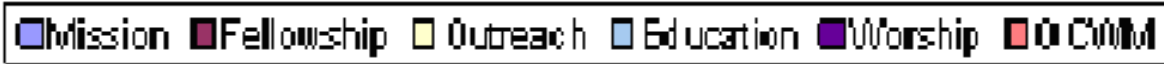
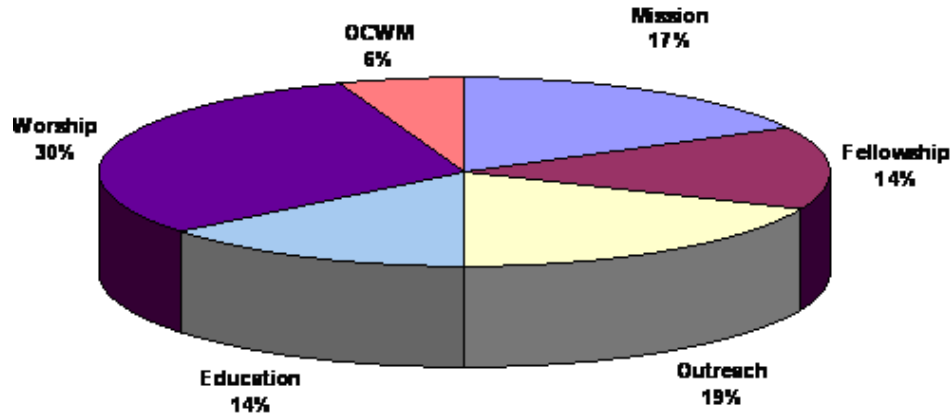
Respectfully submitted – Cindy M., Consistory President

SUMMARY OF MEMBERSHIP CHANGES – 2008

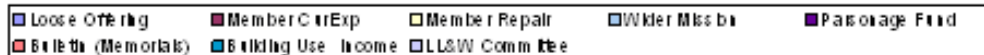
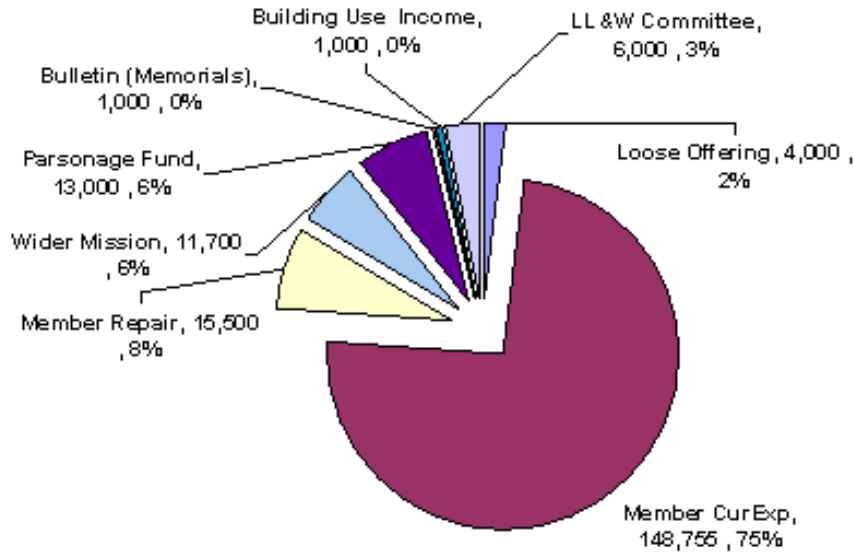
Membership, January 1, 2008		292
Baptisms (8)		
Michael D.	William Vance S.	
Nathan G.	Devin S.	
Leah M.	Skylar T.	
Emily M.	Joel W.	
Profession of Faith (8)		
Paul B.	Michael C.	
Carole B.	Kathy C.	
Ken C.	Richard S.	
Pat C.	Judy S.	
		8
Confirmands (7)		
Kelsey C.	Kevin P.	
Kyle C.	Devin S.	
Emily M.	Macy V.	
	Andrew W.	
		7
Transferred In (2)		
Jim S.		
Linda S.		
		2
Transferred Out (2)		
Paul G.		
Wanda G.		
		(-2)
Deaths (6)		
Kenneth A.	George C.	
Sarah B.	Fred M.	
Rebecca C.	Freda R.	
		(-6)
Membership: December 31, 2008		301

EXPENSES BY CATEGORY

Grace UCC Expenses by Category

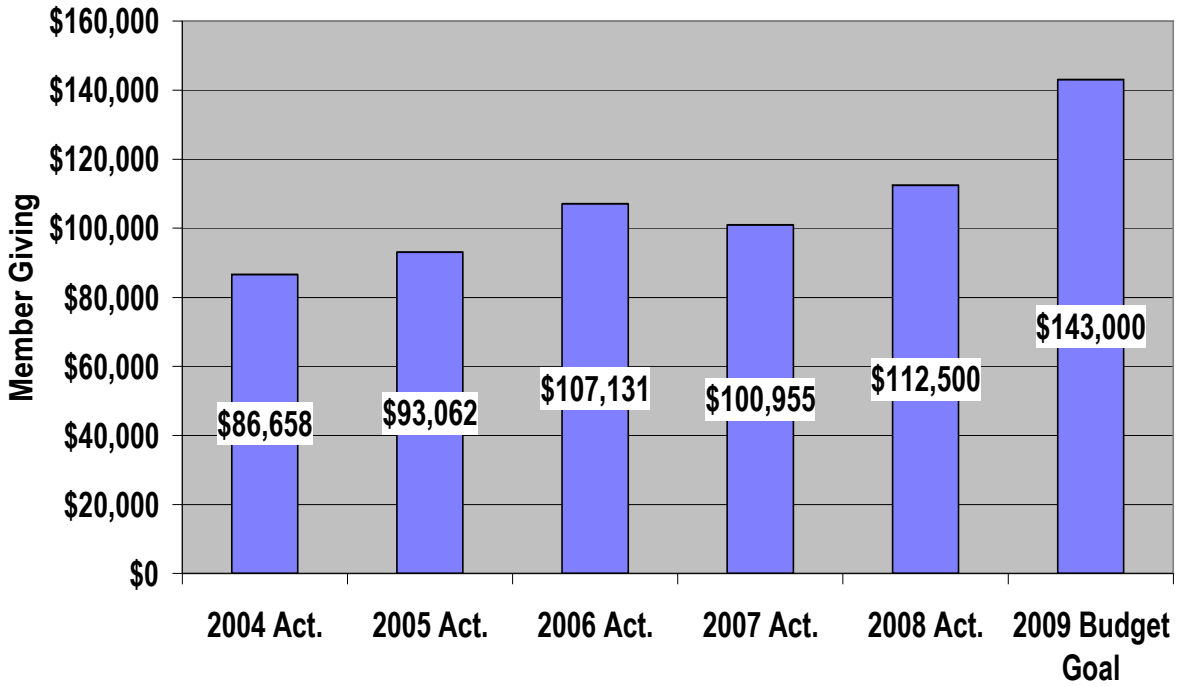


Grace UCC Projected Income by Source



MEMBER GIVING TRENDS

Member Giving Trends



Total Envelope + Loose Offering - By Year



BALANCE SHEET – DECEMBER 31, 2008

Benevolence Account

Beginning Balance	- 0 -
Income	\$10,491.92
Expense	<u>- 10,491.92</u>
Ending Balance	- 0 -

Current Expense Account

Beginning Balance	\$(567.78)
Income	184,586.94
Expense	<u>- 186,046.14</u>
Ending Balance	\$(2,026.98)

Repair Fund

Beginning Balance	\$8,811.89
Income	8,097.70
Expense	<u>- 9,670.24</u>
Ending Balance	\$7,239.35

Emergency Fund

Beginning Balance	\$807.00
Income	141.40
Expense	<u>624.07</u>
Ending Balance	\$324.33

Memorial Fund

Beginning Balance	\$4,371.84
Income	13,621.42
Expense	<u>- 8,659.70</u>
Ending Balance	\$9,333.56

Capital Improvement Fund

Beginning Balance	- 0 -
Income	155,625.85
Expense	<u>- 96,860.68</u>
Ending Balance	\$58,765.17

Income Sources for Capital Improvements

Member Donations	\$44,603.00
Memorial Fund	7,760.50
Memorial Fund CD	24,423.35
Father's Day Bulletin	324.00
Trust Budget	20,000.00
Cemetery Fund	58,000.00
Memorials	<u>515.00</u>
Total	\$155,625.85

BALANCE SHEET – DECEMBER 31, 2008 (continued)

MEMORIALS RECEIVED

Memorial Fund

Fred M.	\$1,605.00
George C.	635.00
Sarah B.	215.00
John R.	500.00
Ann B.	100.00
Rebecca C.	145.00
Bob B.	245.00
Freda R.	<u>45.00</u>
	\$ 3,490.00

Repair Fund

Freda R.	\$50.00
----------	---------

Capital Improvement

Bob B.	\$50.00
Kenneth A.	585.00
Freda R.	<u>70.00</u>
	\$705.00

In Honor

Erin & Steve O-S.	\$20.00
Vesta & David R.	<u>50.00</u>
	\$70.00

Respectfully Submitted – Elaine W., Treasurer



TRUST BUDGET REPORT

Trust Budget Committee Annual Report - 2008

Income

2007	Balances Brought Forward:	<u>Account</u>	<u>Income</u>	
	Undesignated Fund	UND	\$9,545.23	
	Building Repair Fund	BR	\$3,759.20	
	Education Fund	EDUC	\$6,585.52	
	Scholarship Fund	SCH	\$9,528.37	
	Estelle Yingling Fund-Undesignated	YING	\$4,782.73	
			\$34,201.05	
2008	Trust Fund Income:			
	Undesignated Fund	UND	\$13,805.62	
	Building Repair Fund	BR	\$1,511.42	
	Education Fund	EDUC	\$4,611.53	
	Scholarship Fund	SCH	\$5,465.56	
	Estelle Yingling Fund-Undesignated	YING	\$4,637.41	
	Monthly Account Interest		\$47.93	
	Other Trust Fund Income:		\$0.00	
2008	<u>Total Funds Available</u>		\$30,079.47	\$64,280.52

Distributed Expenses

Allocations

	<u>Account</u>	<u>Approved</u>	
Current Expense-budget supplement	UND	\$9,500.00	
Pastoral Recognition	UND	\$300.00	
Floor Polisher	BR	\$1,045.00	
Capital Fund-Lrng Ctr - Loan	BR	\$2,500.00	
Youth Event registration	EDUC	\$1,710.00	
Sunday School & Child Church support	EDUC	\$1,100.00	
Capital Fund-Lrng Ctr - Loan	YING	\$5,500.00	
Capital Fund loan	UND	\$9,000.00	
Capital Fund loan	EDUC	\$7,100.00	
Capital Fund loan	YING	\$3,900.00	
Scholarships - 2007	SCH	\$6,500.00	

2008	<u>Total Allocated Expenses</u>		\$48,155.00	
-------------	--	--	--------------------	--

2008 Year End Balances

	Undesignated Fund	UND	\$4,553.81	
	Building Repair Fund	BR	\$1,730.31	
	Education Fund	EDUC	\$1,298.68	
	Scholarship Fund	SCH	\$8,514.48	
	Estelle Yingling Fund-Undesignated	YING	\$28.24	
	<u>Total Unallocated Funds</u>		\$16,125.52	
	<u>Total Balances + Expenses</u>		\$64,280.52	\$64,280.52

2008 TRUST BUDGET ACCOUNT SUMMARY – PREPARED 1/12/2009

<u>Account</u>		<u>Starting Balance</u>	<u>Income YTD</u>	<u>Allocated YTD</u>	<u>Available To Allocate</u>
Allocation Fund Accounts:					
UND	Undesignated Fund	\$9,545.23	\$13,808.58	\$18,800.00	\$4,553.81
BR	Building Repair Fund	\$3,759.20	\$1,516.11	\$3,545.00	\$1,730.31
ED	Education Fund	\$6,585.52	\$4,623.16	\$9,910.00	\$1,298.68
SCH	Scholarship Fund	\$9,528.37	\$5,486.11	\$6,500.00	\$8,514.48
YING	Estelle Yingling Fund-Undesignated	\$4,782.73	\$4,645.51	\$9,400.00	\$28.24
Total		\$34,201.05	\$30,079.47	\$48,155.00	\$16,125.52
Holding Accounts:					
Trust Budget Operational Acc't		\$53.54	\$0.00	\$16.80	\$36.74
Total In Holding Accounts		\$53.54	\$0.00	\$16.80	\$36.74
Total Trust Budget Balance		\$34,254.59			\$16,162.26

Trust Budget Summary

Total Since 1978 Balances

Undesignated

Income From Trust	\$267,859.14	
Other Income	\$3,850.82	
Expense	\$267,156.15	\$4,553.81

Building Repair

Income From Trust	\$27,547.37	
Other Income	\$1,285.36	
Expense	\$27,102.42	\$1,730.31

Education

Income From Trust	\$92,255.18	
Other Income	\$923.85	
Expense	\$91,880.35	\$1,298.68

Scholarship

Income From Trust	\$110,930.23	
Other Income	\$1,534.25	
Expense	\$103,950.00	\$8,514.48

Estelle Yingling Fund

Total Since 2002

Income From Trust	\$25,925.82	
Other Income	\$65.82	
Expense	\$25,963.40	\$28.24

Totals

Income	\$532,177.84	
Expense	\$516,052.32	\$16,125.52

TRUST INVESTMENT FUND REPORT

In memorial to those members who have contributed to the GUCC Trust Fund: Flora A., Helen B., Romaine C., Clyde and Irene H., Lillie H., Glenn and Catherine M., Russell M., Jerre and Ned M., Mildred P., John R., Matilda R., Anna Mary S., Otis and Ruth S., Alma R. S., Hazel S., Marlin S., Frances S., and Leroy and Esther W.

TOTAL TRUST FUND 12-31-2008 **\$380,970.14**

SECURITY OR ACCOUNT	COST	COUPON RATE	MATURITY
GMAC - Notes	\$21,000.00	6.750%	9/15/2016
FoMoCo Credit - PFD	\$ 6,250.00	7.350%	10/11/2006
MBNA Capital - PFD	\$31,250.00	8.125%	10/1/2032
GMAC - Notes	\$30,000.00	8.100%	1/15/2024
Nuveen Quality Fund - PFD #2	\$26,308.80	8.300%	OPEN
Renaissance RE Holdings	\$18,081.00	7.300%	2/4/2008
PMA Capital Corp	\$30,000.00	8.500%	6/15/2018
Nuveen Quality Fund - PFD #1	\$17,611.00	7.870%	OPEN
ABN AMRO Capital - PFD	\$18,000.00	5.900%	OPEN
PNC Capital Trust PFD	\$20,200.00	6.125%	OPEN
GMAC Smart Note	\$30,000.00	7.000%	11/25/2024
Harleysville Group	\$16,000.00	5.700%	7/15/2013
National City Capital	\$10,000.00	6.625%	5/25/2047
New Windsor State Bank CD	\$10,000.00	5.200%	8/23/2009
Prudential Financial Inc	\$ 9,000.00	6.000%	11/15/2023
Prudential Financial Inc Notes	\$35,000.00	6.000%	2/15/2023
Lehman Brothers Holdings – Note***	\$35,000.00	6.250%	2/22/2023

*** Lehman Brothers Holdings Note included in Lehman Brothers Bankruptcy Proceedings.

Current Market Value 12/31/2008 = \$3,500.00. This bond is not currently paying us any interest.

PNC Checking Account	\$3,848.00
FBW – The Reserve Fund (Money Market)	\$29.90
FBW – Treasury Cash Trust	\$13,114.88
FBW – Cash Account	\$276.56
TOTAL	\$380,970.14

INCOME:

Beginning Balance 01-01-2008	\$ 3,136.23
Earnings on Investments	<u>\$24,126.99</u>
	\$27,263.22

PAID OUT: GUCC Trust Budget Funds

Scholarship	\$4,215.56	
Education	\$4,611.53	
Undesignated	\$13,805.62	
Building	\$1,511.42	(\$24,144.13)

FUNDS AVAILABLE December 31, 2008 **\$3,119.09**

PARSONAGE FUND REPORT

The Grace Parsonage Fund was established May, 11, 2006 from proceeds from the sale of the former parsonage in the amount of \$286,401. A portion of earnings from the fund are designated by the Consistory to be used to partially defray housing allowance costs for the Pastor while the balance of earnings are currently directed to be reinvested into principal. Effective April 1, 2008 the reinvestment rate was reduced from 25% to 10% to address current budget needs.

TOTAL PARSONAGE FUND 12-31-2008 **\$295,871.67**

AXIS Capital Holdings	\$ 25,000.00	7.250%
HRPT Properties Trust	\$ 25,000.00	7.050%
US Bancorp Capital	\$ 25,000.00	6.500%
Renaissance Holdings	\$ 20,000.00	6.600%
Prudential Financial	\$ 6,000.00	6.000%
Susquehanna Capital I	\$ 60,000.00	9.375%
Berkley WR Corp	\$ 26,000.00	6.150%
J C Penney Co - Notes	\$ 10,000.00	5.700%
Prudential Financial	\$ 50,000.00	6.000%
Lehman Brothers – Note***	\$ 44,000.00	6.250%

Cost \$291,000.00

*** Lehman Brothers Holdings Note included in Lehman Brothers Bankruptcy Proceedings. Current Market Value 12/31/2008 = \$4,400.00. This bond is not currently paying us any interest.

Treasury Cash Trust	\$ 31.91
Reserve Fund	\$ 8.30
<u>PNC Checking Account – Principal (\$1,691.41 at 12/31/2007)</u>	<u>\$ 4,831.46</u>
TOTALS	\$295,871.67

INCOME:	Beginning Available Balance 12-31-2007	\$ 1.42
	Earnings Available for Disbursement	<u>\$17,535.28</u>
		\$17,537.20

PAID OUT:	<u>GUCC Current Expense Fund Account</u>	<u>\$15,970.10</u>
	PNC Account Available Funds 12/31/2008	\$1,567.08

Trust Fund Committee: George P., Chair
Members: Ann M., George F.



MINISTRIES OF GRACE UCC

ADMINISTRATION

CONSISTORY
MAILING COMMITTEE
SPIRITUAL COUNCIL

BUILDING

PROPERTY COMMITTEE
CEMETERY COMMITTEE

EDUCATION

CHRISTIAN EDUCATION COMMITTEE
LEARNING CENTER SUPPORT COMMITTEE
SCHOLARSHIP COMMITTEE
YOUTH MINISTRY

FELLOWSHIP

LAY LIFE AND WORK COMMITTEE
“Son”-Shine Committee
Carpenter’s Table
Supper Committee
Apple Dumpling Gang

FINANCE

AUDITING COMMITTEE
STEWARDSHIP COMMITTEE
TRUST INVESTMENT COMMITTEE
TRUST BUDGET COMMITTEE

OUTREACH

BLOODMOBILE/RED CROSS
CARING & SHARING MINISTRIES
HOMEWOOD AT PLUM CREEK
MEMBERSHIP GROWTH & OUTREACH
GRIEF SUPPORT

WORSHIP

ACOLYTE GUILD
ADULT CHOIR
WORSHIP & MUSIC COMMITTEE
Altar Guild
Acolytes
Lay Readers
Greeters
Nursery Attendants

MINISTRY PARTICIPANTS – 2008

Altar Guild

Elaine H., Chair Sue R.
Carolyn A. Linda B.
Elaine W. Nancy K.
Kathy Sandrowski Melissa R.

Auditing Committee

Ann M. Margaret D.

Bloodmobile/Red Cross Reps.

Sandy C. Diane W.
Margaret D. Doris S.
Ellen L.

Caring & Sharing Ministries

Pastor Steve

Carpenter's Table

Mary Sue B. George M.
Dottie L. Irene U.
Delbert B. Jamie N.
Vesta R. Dottie L.

Christian Education

Cindy M., Chair
Erin O-S., Vice-Chair
Jay W., Treasurer
Tom L., Secy. Susan S.
Ellen L. Bonnie M.
Michelle V. May F.

“Son”-Shine Committee

Sandy C. Nancy K.
Joan & Ronnie R. Doris S.
David & Vesta R.

Homewood at Plum Creek Reps.

Ellen L. Doris S.

Mailing Committee

Erma A., Chair Ronnie R.
Dorothy L. Madeline W.

Membership Growth & Outreach

Susan S., Chair Joan R.
Bonnie M., Secretary George M.
Delbert B. Pastor Steve

Worship & Music

Elaine M., Chair Lois H.
Fairy F. Cindy M.
Doris S. Pastor Steve

Property Committee

George M., Chair Charles G.
Paul B. Fred M.
Dan W. David R.

Scholarship Committee

Ellen L., Chair Libby C.
Michael G. Virginia G.
Diane W. Nancy O.

Trust Budget Committee

Tom L., Chair Lisa K., S.S.
Fred M., Cong.
Rhiannon R., Youth

Trust Investment Committee

George C., Chair Ann M.
George F.

Learning Center Support Committee

Gary A., Chair
Ellen L., Vice-Chair
Sandy C., Secretary
Bob F. Connie H.
Kelly H. Pastor Steve
Anna M. Beth H.
GULC Director (Naomi L.)
Donna S.
Beverly B., Treasurer

MEMBERSHIP GROWTH AND OUTREACH COMMITTEE REPORT

In 2008, the Membership Growth and Outreach Committee was busy. We were very excited about our First Annual Easter Egg Hunt, which was a success. Our committee would be happy to welcome additions to our small group. Please see any one of us if you are interested in joining with us to reach out and grow our membership.

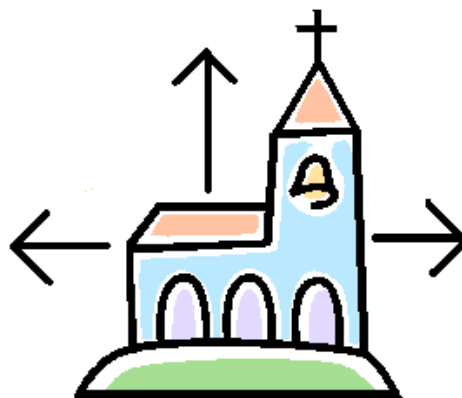
Outreach Events

- Held First Annual Easter Egg Hunt
- Passed out Door Hangers in the Taneytown area for the Lenten and Advent Seasons
- Made posters advertising our Rally Dally festivities, and placed them in the community
- Sponsored several movie nights
- Provided gifts to the newly baptized
- Provided welcome gifts to new members of the congregation
- Sent birthday cards to the membership of the congregation
- Provided visitor cards for our visitors to fill out

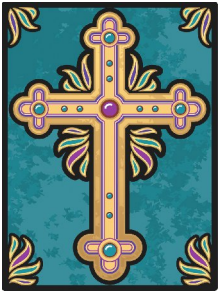
Projects for 2009 include:

- Continue to send birthday cards to our members
- Continue providing baptism and new member gifts
- Continue providing visitor cards
- Continue the Annual Easter Egg Hunt
- Planning outreach to our college and military members
- Develop a mentoring program to orient and welcome new members
- Possible Ice Cream Social in summer, 2009
- Begin sending cards to members we haven't seen in a while
- Plan and develop other activities to attract new members

Respectfully submitted - Bonnie M. and Susan S., Co-Chairs
Members: Delbert B., George M., Joan R., Pastor Steve



WORSHIP AND MUSIC COMMITTEE REPORT



The objective of the Worship and Music Committee is to make the worship service a meaningful experience. This can be done through the spoken word and music.

Lois H. resigned as Choir Director as of May 31, 2008, and we thank her for her wonderful leadership over the previous year and a half, and for continuing on as a member of the committee for the remainder of 2008. The Worship and Music Committee has been and continues to search for a new Choir Director. Anna M. graciously volunteered to direct the Choir from November 2008 thru June 2009, to provide meaningful music during the service. The Church Choir which is a volunteer group that is dedicated and loyal do a commendable job throughout the year.

Doris S. resigned as Chair Person of the Altar Guild as of March 30, 2008, but has remained as a dedicated member of the committee. Elaine H. graciously accepted being Chair Person of the Altar Guild. The Altar Guild does a wonderful job of ensuring the paraments are in place, the candles have oil, and the Altar Flowers are prepared after the service for the person providing the flowers for that Sunday. During Christmas and Easter this committee is very busy with all the flowers that beautify the sanctuary. A Big Thank You to this committee.

The Graduates, Christina M., Heidi R., Megan V., and Brian W., were honored on June 15, 2008 as they go to further their education or enter the work force.

Our men in the Military Service, Ben G., Mark G., Austin M. and James M., were blessed as they left to serve our country.

During the summer, the church services were "Family Oriented," shorter with songs for the children to learn and sing.

All Saints Sunday was held November 9, 2008 with candles being lit by Family Members in memory of Becky C., Fred M., George C., Kenneth A., Freda R., Bob B., Jay L., Robert Ohler, Genoveva 'Eva' C., and Eleanor (O.) B. This was a very meaningful service with the assistance of Elaine H..

If anyone has suggestions for improving our worship services, please feel free to contact anyone on the committee.

The committee is composed of the following:

Elaine M., Chair
Members: Pastor Steve, Fairy F., Anna M.
Elaine H., Cindy M., Lois H.



CHRISTIAN EDUCATION COMMITTEE REPORT



Cindy M., Chair/Teacher
Erin O-S., Vice Chair/Teacher/Children's Church Leader
Tom L., Secretary
Jay W., Treasurer
Bonnie M., Sunday School Superintendent
Ellen L., Teacher
May F., Teacher
Michelle V., Teacher

The Christian Education Committee is a small group of individuals committed to our purpose, which is to organize, inspire and continually support educational programs for all ages, motivated by the biblical history, life and teachings of our Lord Jesus Christ.

This year, the Sunday school curriculum varied from class to class, depending on the needs and interests of its members. Due to an age gap, we did not have a Middle School Class this year.

Our Sunday school teachers for the 08/09 school year are Bonnie M., Susan S., May F., Ellen L., Kelly H., Michelle V., LeeAnn P., Erin O-S., Tom L., and Cindy M..

Children's Church is offered three Sundays a month with one Sunday dedicated to the family where the children attend the service along with their parents. We have rotating teachers for Children's Church, including; Kelly H., Erin O-S. and Liz A..

A monthly 'Work Frolic' continued this year on the first Sunday of the month, with a group lesson, snacks, and craft projects.

Christian Ed. continues to promote many programs and activities including, but not limited to, Summer Camp for our youth, Rally Day activities, Vacation Bible School, Sunday School curriculum, Children's Church curriculum, and seminars. Christian Education also supports outreach projects that our Sunday School participates in, including donations to Hoffman Homes and Homewood at Plum Creek, Samaritan's Purse Operation Christmas Child, Caring and Sharing, the Young at Heart's sponsorship of a family at Christmas, and our sponsored child (Iman Sarraj) who we support through the Child Sponsorship Program of the UCC's Wider Church Ministries.

The year 2009 will find the Christian Ed. Committee looking at new ways to enhance our programs through restructuring and innovative programs. With attendance declining and volunteers in small supply, we need to evaluate our curriculum and our mission(s).

Due to a lack of available volunteers, we have hired Naomi L. to handle our Nursery during worship services. We are enlisting our youth to help out in nursery as well as Children's Church.

We also reluctantly accepted the resignation of Bonnie M. as Sunday School Superintendent. As of this date, we have not filled the position of Sunday School Superintendant or the Sunday School Secretary position.

A special thanks to Anna M. and Pastor Steve who conducted several bible studies for all those interested.

I thank those individuals who give their time and talents to teach the word of Jesus Christ to our members of all ages.

Respectfully submitted – Cindy M., Chairperson

GRACE UCC CHRISTIAN EDUCATION TREASURY
2008 Year End Statement - Prepared On January 12, 2009

Starting Balance for 2008 (2007 ending balance)

\$ 2,083.56

Receipts

Offerings, Donations & Receipts:

Weekly Sunday School Offering	1,255.58
Homewood & Hoffman – Every 4 th Sunday Offering	331.24
Youth Sub Sale Fund Raiser	396.25
Youth Car Wash & Bake Sale	219.00
Youth Silent Auction	277.00
Donations toward Sponsor Child	150.00
Mother's Day Bulletin (Young at Heart Class)	278.00

Trust Budget – Educational Allocations:

Sunday School Picnic, Rally Day & Supplies	150.00
Christian Video Licensing	200.00
National Youth Event	1,710.00
Bible Study Materials	400.00
Vacation Bible School	200.00
Sponsor Child	150.00

Total Receipts

\$ 5,717.07

Expenses

Sunday School Curriculum	1,603.04
Children's Church Curriculum & Materials	302.06
Pastor's Christmas Gift	100.00
Christian Video Licensing	186.00
Easter Materials	38.58
Pavilion Rental, Supplies & Prizes for Summer Picnic	101.28
Rally Day Materials	40.23
Donations to Hoffman Home for Youth & Homewood at Plum Creek	283.39
Donations toward Thanksgiving Baskets for Needy Families	47.85
Registration & Travel to National Youth Event (4 Youth, 3 Adults)	1,900.00
Youth Group (Bowling, Ski/Tubing, Movies, Pizza, Laser Tag, Camping, etc)	811.68
Vacation Bible School	139.83
Bible Study Materials	229.37
Samaritan's Purse: Operations Christmas Child	245.00
UCC Child Sponsor Program	314.29
Nursery Attendant	160.00
Young at Heart Class – Donation toward Repair Fund from Mother's Day Bltn	278.00

Total Expenses

\$ (6,780.60)

Ending Balance for 2008

\$ 1,020.03

Summary of Holding Accounts:

Account	Starting Balance	Expense	Income	Ending Balance
100 - Sun Sch Curriculum	\$ 1,478.98	\$ 1,603.04	\$ 1,255.58	\$ 1,131.52
150 - Sun Sch Op Expenses	\$ 72.51	\$ 466.09	\$ 350.00	\$ (43.58)
200 - Children's Church	\$ 272.09	\$ 302.06	\$ -	\$ (29.97)
300 - Designated Offerings	\$ -	\$ 331.24	\$ 331.24	\$ -
400 - Youth Group	\$ 275.53	\$ 2,711.68	\$ 2,602.25	\$ 166.10
500 - Special Programs	\$ (334.17)	\$ 928.49	\$ 900.00	\$ (362.66)
600 - Young At Heart	\$ 318.62	\$ 278.00	\$ 278.00	\$ 318.62
700 - Nursery	\$ -	\$ 160.00	\$ -	\$ (160.00)
Totals	\$ 2,083.56	\$ 6,780.60	\$ 5,717.07	\$ 1,020.03

YOUTH GROUP REPORT

The youth group of Grace UCC is comprised of any interested youth in grades 6-12. The group is led by adult leaders and volunteers who share an interest in supporting, nurturing and guiding young people while having fun. The youth group meets once a month for fellowship, fun and planning; and at additional times for extra projects and large events.

The mission of the youth group is to provide a safe place where youth can question, explore, learn about, and practice their faith through fellowship, fun, community building, and outreach projects in the church, community, and world at large.

The youth and their leaders play a vital role at Grace UCC by planning and participating in worship, and supporting the mission of the church and community through their time, talents and fundraising efforts.

The following is a list of activities and events that the youth participated in during 2008:

- Volunteering at SERRV
- Souper Bowl of Caring – money raised was donated to Caring and Sharing Ministries
- Trip to Ski Liberty for a fun night of snow tubing
- CROP walk – a 5-mile walk to raise money for the hungry in Carroll County
- Hosted a car wash and bake sale to raise money for National Youth Event
- Participated in the 30-hour Famine
- Had a fun afternoon “shooting each other” in Laser Tag
- Held a Silent Auction to raise money for National Youth Event
- Attended the National Youth Event in Knoxville, Tennessee
- Planned and participated in a weekend camping trip in the Catoctin Mountains
- Participated in and raised money for UNICEF through “backwards Trick or Treating”
- Decorated and entered the Pumpkin People Contest in Taneytown
- Participated in the Sleep-Out for Homelessness (see photo below)
- Visited a nursing home to sing Christmas Carols to the residents.

What a busy year for the youth! These future leaders of the church have an abundance of energy, compassion for others, knowledge of the issues in the world, and aren't afraid to tackle problems!

Respectfully submitted – Bonnie J. M., Volunteer Youth Leader



Teens paint cardboard boxes they will sleep in Saturday night, November 22, 2008, at Grace UCC in Taneytown.

GRACE UNITED LEARNING CENTER REPORT

The Grace United Learning Center (GULC), a mission of Grace Church, has enjoyed another successful year. This success is due primarily to the dedicated staff and the numerous volunteers that support the Center. Each day a volunteer picks up the lunches for the Center which are now prepared by the Country Kitchen. Numerous volunteers assist the staff and ensure that we have the proper child/staff ratio. Volunteers help with the property matters that need attention. We enjoy good support from the families of the children in our care. The Lay Life and Work Committee provided financial support in the amount of \$400 a month. The GULC Support Committee recently ended our request for this monthly support in an effort to become financially independent. The Consistory and Congregation of Grace Church has provided new heating and air-conditioning systems and new windows as part of the Capital Improvement Project. In a show of appreciation, the Support Committee voted to pledge \$1000 over a three-year period to the Capital Improvement Project. Numerous persons support the Center financially by participating in the various fundraisers, by making monetary donations, by recycling paper in the containers on the church parking lot, or by signing up for the Kennie's Market shopping program. The Apple Dumpling Gang provided apple dumplings for the Center to sell at a city event. We are grateful for the many ways that many people, families and organizations support the Learning Center and its mission of promoting and providing high quality, affordable care for children of working families.

The Center has enjoyed an increase in enrollment over the past year. We are currently fully enrolled, except for two openings in the before and after school program. We have no less than 22 and no more than 25 students on any one day.

In addition to the heating and air-conditioning systems and the window replacement projects, the Center was repainted in the fall. New playground rubber mulch was purchased to improve playground safety and reduce the clothes stains from the rubber mats used previously. New playground equipment was purchased. The swings were updated. The mulch and the equipment upgrades were done primarily through very generous donations. A newly designed sign to replace the one that stands on the sidewalk in front of the church was donated by a support committee member. This sign will be placed out front after the street construction in front of the church is completed.

Administratively, the Employee Policy and Procedure Manual and the Parent Handbook were both reviewed and updated. The Center Director has begun the staff credentialing step that is part of getting the Center accredited. We continue to receive outstanding administrative support from Bev B., the Center Treasurer and the church Office Administrator. The individual members of the GULC Support Committee work diligently to provide the needed policy guidance, center and staff support and operational oversight.

Financially, the tuition rates are reviewed annually to ensure that adequate income is received to support operating expenses. The tuition is supplemented by generous donations and successful fundraisers. The Center savings account balance increased by more than \$10,000 from the beginning of 2008 while maintaining an appropriate checking account balance.

Gary A., Chair; Ellen L., Vice-Chair
Sandy C., Secretary; Beverly B., Treasurer
Members: Pastor Steven Ostendorf-Snell, Bob F.,
Connie H., Beth H., Kelly H., Anna M., Donna S.

UNITED LEARNING CENTER – FINANCIAL REPORT 1/1/08-12/31/08

INCOME:

Tuition		\$122,900.69
Donations		10,047.74
LL&W (monthly support + other donations)		4,122.00
Fundraisers: Wolfgang	\$ 4,718.75	
Paper Retriever	122.27	
Change for Kids	<u>20.79</u> =	4,861.81
Kennie's Market Rebate		2,538.79
Food Program		2,833.88
Food Lion Rebates		<u>122.27</u>
	Total Income	\$147,427.18
	Balance brought forward January 1, 2007	<u>4,032.25</u>
		\$151,459.43

EXPENSES:

Salaries		58,209.45
Payroll taxes (payroll deductions)		19,584.43
Secretary/Treasurer salary (1/2)		6,367.21
Workman's Comp (Zurich)		1,202.91
Flex Plan		300.00
Employee health insurance: Kelly & Associates		19,887.84
Swain Supply		1,286.42
School Specialty (school supplies)		185.91
Lunches (Thunderhead Bowling Center, Jan-Sept)		6,059.82
Lunches (Country Kitchen, Oct-Nov)		2,250.00
Kennie's Markets		3,051.98
Food Lion		89.55
Wolfgang		2,736.31
Gianni's Pizza Fundraiser		358.00
Training – continuing education		1,439.00
Subscriptions		1,322.61
A-AAA Synthetics (Rubber mulch for playground)		9,000.00
Playtime Playground Equipment		2,350.00
Telephone		681.67
Field Trips (bus charges)		1,275.00
Field Trips (admissions)		270.26
Audit Fee		80.00
Spider Web, Inc (T-shirts, 2 bills)		449.55
Church Water/Sewer/snow removal		700.47
Labor fee – Painting		750.00
Grace UCC Capital Campaign		200.00
Matlin Signs		394.00
Picnic Table		327.74
Fire Marshall Inspection		100.00
Advertising		206.25
Office Supplies		326.98
Miscellaneous Expenses		<u>3,156.54</u>
	Total Expenses	\$ 144,599.90

Checkbook Balance 12/31/08	\$ 6,859.53
Savings Account Balance: 12/31/2008	\$14,800.95

LAY LIFE AND WORK COMMITTEE REPORT

The purpose of the Lay Life and Work Committee is to coordinate activities for the church to promote Christian witness and fellowship among church members.

The Committee members for 2008 were:

Joan R. – Chairperson	Emily M. – Youth Representative
Jamie N. --Vice-chairperson	Erin O-S.
Bonnie M. – Secretary	Dottie L.
Sue R. – Treasurer	Joan F.
Anna M. – Consistory Representative	Mary Sue B.
Macy V. – Youth Representative	Michelle V.

The 2008 Committee activities were as follows:

Worship and Fellowship

- * Annual Meeting & Stewardship Luncheons
- * Sunrise Service Continental Breakfast
- * Lenten & Advent Meals
- * GULC Sunday Luncheon
- * Father's Day Bulletin
- * Food for Rally Day & Church Picnic
- * Everybody's Birthday Party
- * Nightwatch Trip Snacks
- * Trip to see 'American Jukebox'
- * Family Tree Ornaments
- * Family Night
- * Fall Decorating
- * Harvest Party
- * Christmas Decorating
- * Tree of Love
- * Door Wreaths
- * Baby Bonds

Outreach and Community Support



- * "Son"-Shine Committee's ongoing support of members' needs
- * Daffodil Day
- * Clothing Drive
- * Firemen's Christmas Banquet
- * Carpenter's Table donations
- * Bloodmobile donation
- * Harvest Home Food Pantry Collection
- * Community Thanksgiving Service Reception
- * Snacks for Caring and Sharing Meeting & Grief Support Group

Fundraisers

- * Apple Dumpling Sales (6) total: 2568 apple dumplings!
- * Basket Bingo (2)
- * Spring Supper

Lay Life is a very busy committee. Thanks to all the members for their continued dedication to make Grace Church a better place. Also thanks to you the Congregation for your continued support.

Joan R., Chairperson

LAY LIFE AND WORK COMMITTEE INCOME REPORT

CHECKING ACCOUNT

Balance brought forward 1/1/2008 **\$8801.75**

Receipts:

Daffodil Days	315.00	
Basket Bingo (Spring \$7631.63; Fall \$8197.75)	15829.38	
Family Night	726.00	
Spring Public Supper	11182.10	
Father's Day Bulletins	233.00	
"Son"-Shine Fund (funeral/wedding donations, misc. donations)	1728.26	
Tree of Love	480.00	
Kennie's Community Treasures donation	1728.26	
Apple Dumpling sales	3696.00	
Checking account interest	18.18	
Lowenthal gift	5000.00	
Checks added back to account	<u>521.00</u>	
Total Receipts		<u>\$41654.82</u>

TOTAL

\$50456.57

Expenses:

American Cancer Society – Daffodils	450.00	
Basket Bingo (Spring \$3653.60, Fall \$3503.04)	7156.64	
Family Night	1179.74	
Spring Public Supper	7170.36	
"Son"-Shine Fund	710.00	
Weddings/funerals	820.71	
Carpenter's Table	437.15	
Swain Supply – kitchen supplies	193.72	
New Members Reception	14.86	
Confirmation Reception	53.37	
Youth – Night Watch	29.81	
Harvest Festival	69.08	
Apple Dumpling supplies	541.84	
Pastor's Christmas Gift	100.00	
Christmas Eve Congregational Gifts	145.85	
Grace UCC – current expenses	6182.00	
GUCC Capital Improvement Fund	644.00	
Grace United Learning Center	4122.00	
Refreshments for events	104.00	
Kennie's Market	1137.46	
Postage and Mailings	782.01	
All-Church Birthday Party	113.29	
Movie Nights	97.10	
Father's Day Bulletins	8.99	
Correction from 2007 ledger	<u>.01</u>	
Total Expenses		<u>\$32263.99</u>

TOTAL

\$18,192.58

LAY LIFE AND WORK COMMITTEE INCOME REPORT (continued)

SAVINGS ACCOUNT

Beginning Balance 1/1/2008	\$8337.18
Bank Interest	14.98
13-Month CD purchased 8/1/2008	<u>7300.00</u>
Ending Balance 12/31/2008	\$1052.16

FUNDRAISERS/PROFITS

Basket Bingo – Spring	\$3978.03
Basket Bingo – Fall	\$4694.71
Spring Public Supper	\$4001.74
Father's Day Bulletins	\$233.00
Tree of Love	\$480.00
Apple Dumpling Sale for Grace United Learning Center	\$740.00
Apple Dumplings – December Sale	\$1172.41

Respectfully submitted
Susan I. R., Treasurer



“SON”-SHINE COMMITTEE REPORT



In the past year, the “Son”-Shine Committee has been kept busy with giving encouragement to members of the congregation during times of need.

The following is an explanation of how this Committee functions:

Purpose: Members of this Committee remember the members of the church in times of need, such as illness, death in the family, personal loss or crisis, convalescence from illness, and shut-in members. They share responsibilities for calling upon members in situations described.

Guidelines:

Meals: during times of need

House calls: by phone or in person

Flowers, fruit, or gift certificate (discretion of Committee):

For hospitalization:

1. Once during 12-month period
2. \$25.00 per gift

For births:

\$25.00 savings bond

Cards: shut-ins, sympathy, 2nd or more hospitalizations within the year.

Worship tapes: as needed

Christmas & Easter: delivering donated flowers to shut-ins and those on the prayer list.

Funeral luncheons: as requested

The Committee activities for 2008 were as follows:

- Delivered 24 Easter and Christmas flowers to church shut-ins and folks with ‘health concerns’
- For the hospitalized: 14 flower arrangements; 6 gift certificates
- Outpatient: 11 youth cards and crafts
- For new babies: 6 savings bonds (\$25)
- Cards: 71
- Funeral luncheons: 6
- Food was taken to numerous church families in time of need

Organization: The “Son”-Shine Committee is composed of 8-12 members. Reporting is done monthly to the Lay Life and Work Committee and to the Pastor. Funding is provided by the Lay Life and Work treasury. Meetings are held as needed and called by any Committee member or the Pastor.

Current Members:

Doris S.

David & Vesta R.

Ronnie & Joan R.

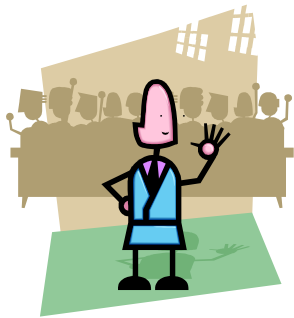
Don & Carolyn W.

Sandy C.

Yours in service – “Son”-Shine Committee

PROPERTY COMMITTEE REPORT

This has been an historic year for our church as far as the method of heating our building is concerned. Ever since the early 1900s, our building has been heated by a gravity steam heating system. That is no longer the case. If you recall in my report of last year, I referred to the fact that we had heating system problems that would have to be addressed. Since the printing of that report, the boiler sprang a leak, and we were forced to make a major decision. As a result, the Property Committee contacted two heating/air-conditioning contractors soliciting information and prices for a new method of heating the various zones of our church. Since most of our AC equipment was very old and inefficient, we decided to pursue modern high-efficient heating and air-conditioning equipment.



At a congregational meeting held in the summer, we all approved a package costing \$90,000, which included new windows in both levels of the Parish Hall, storm glass on all remaining unprotected windows in the main church building, an in-ground LP tank, fuel, and new heating and air-conditioning equipment. The equipment, which uses the existing duct work in our facility, came to a cost of \$75,000. In all preliminary conversations with the heating/air-conditioning contractor, we discussed the use of AC/heat pumps for the primary heat and LP furnaces for secondary heat. I assumed the proposals I received, and as a congregation we approved, was for that type of equipment. I discovered in early November that that was not the case. I contacted the contractor and was told there were several good reasons that we did not have heat pumps. The high-efficiency furnaces we have were not designed to be used with heat pumps, our walls are masonry and not insulated, most of our ceilings are high, and heat pumps are more expensive and require more maintenance than straight air-conditioning. They also have a shorter lifespan. I regret very much that I gave you false information at our congregational meeting this summer. However, I am very glad our heating/AC contractor recommended the most economical and durable equipment available today.

Another project mentioned in last year's report was the repair of the porch roof for the west entrance to the sanctuary. We were fortunate to have a fellow member come forth and offer to take on that project. That repair has been completed.

In looking ahead to the future, the next obvious project should be the painting of the church's exterior.

There are countless other property maintenance jobs that are accomplished during the course of a year. These include lawn care, snow removal, replacing light bulbs, custodial care, etc. I personally thank all of the people who make these things happen. I also thank the members of this committee for their support and assistance. And last, but not least, I thank all of you for your dedication to our church.

Before signing off, I want to ask anyone who is interested in property care and maintenance to become a member of this committee. More than half of this committee is over 74 years of age. Please step up and serve our church. Thanks and have a great 2009.

Sincerely, David R., Property Chairman

CEMETERY BOARD FINANCIAL STATEMENT & REPORT – 12/31/08

RECEIPTS

Checking Account Balance 01/01/08	\$ 6094.48
Mother's Day Offering/Donations	2379.00
Burial Lot Purchases	625.00
Grave Opening Fees	225.00
Ground Rent	300.00
CD 011018200153 Redemption	58913.64
Interest – Estelle Yingling Trust	1390.61
Checking Account Interest	<u>6.88</u>
Total Receipts	\$ 69934.61

EXPENDITURES

Cemetery Maintenance	\$ 6973.00
Trash Dumpster	1011.32
Grave Openings	555.00
Lock Box	40.00
Return Envelopes	36.00
CD 11018200150 Upgrade	1300.00
Capital Improvement Project Loan	58000.00
Checking Account Balance 12/31/08	<u>2019.29</u>
Total Expenditures	\$ 69934.61

INVESTED FUNDS

Savings Account Balance 12/31/08	\$ 536.49
Checking Account Balance 12/31/08	2019.29
CD 11018200147	143642.98
CD 11018200150	<u>4126.40</u>
Total Invested Funds	\$150325.16

The Grace UCC Cemetery Board thanks you for your support this past year. Cemetery beautification continued by adding soil and seed to over 100 grave and tree removal sites. The Cemetery Board also approved a loan of \$58000 for the Grace UCC Capital Improvement Project. This loan will be repaid within 3 years at a rate of 2.9%, which was the CD renewal rate at the time of maturity. Questions and comments regarding the cemetery may be directed to members of the Cemetery Board listed below.

Cindy R., President; Scott W., Keeper of the Plot
Gary W. A., Secretary-Treasurer; Gary A., Caretaker
George F., Board Member

HOMEWOOD AUXILIARY REPORT



As your Homewood representatives, we are responsible for sharing with the congregation any activities held at Homewood at Plum Creek in Hanover. We are also responsible for the membership drive.

Our congregation enjoys sharing the Christmas spirit with the residents of Homewood at Plum Creek. We delivered 45 beautifully wrapped packages to help make Christmas a little more special to the residents.

This year's Auxiliary membership drive was again a huge success. We increased our membership from 93 in 2007 to 97 in 2008 and contributed \$316.00 to the Auxiliary. We thank everyone who joined this year and encourage you to rejoin next fall. As we hear of other needs at Homewood, we will let you know.

Ellen L. and Doris S.

HESSON SCHOLARSHIP COMMITTEE REPORT College Year 2008-2009 Allocation Proposal

The committee received 6 applications for scholarship for the 2008-2009 college year. The committee makes the following recommendations for scholarship.

Student	College Attending	Suggested Scholarship
Rachel G. *	Villa Julie College	\$1,000.00
Steven L. *	McDaniel College	\$1,250.00
Christina M.	Villa Julie College	\$1,250.00
Heidi R.	Marymount University	\$1,250.00
Brian W.	Northwood University	\$1,250.00
Kevin W. *	Towson University	<u>\$ 500.00</u>
		\$6,500.00

* = Non-Member



The Scholarship Committee made its recommendations for scholarship awards to Consistory on May 6, 2008. The Consistory approved the recommendations as presented.

Due to change of plans, the Scholarship Committee received a check for \$1250.00 in September.

Respectfully submitted – Ellen L., Chairman
Members: Libby C., Robert F., Michael J. G., Nancy O., Diane W.